



Heart

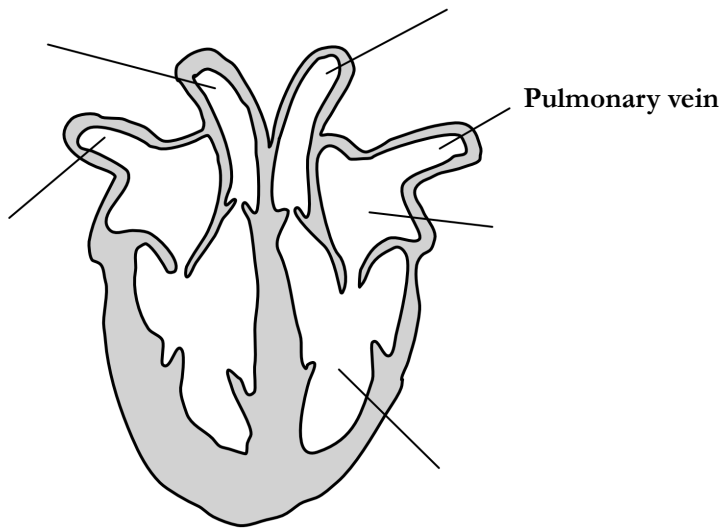
1 What organ system is the heart part of?

.....

[1 mark]

2 Label the diagram below

Label a couple bits and make them label some chambers are vessels



[5 marks]

3 Name the vessel that carries blood from the lungs to the heart

.....

[1 mark]

4 Explain why the circulatory system is often described as a 'double circulatory system'

.....
.....
.....

[2 marks]

5 Name the vessel that carries blood out of the left ventricle and state whether it is oxygenated or deoxygenated.

.....

[2 mark]

6 Are the following definitions true (T) or false (F)?

An artery is a vessel that carries oxygenated blood

An vein is a vessel that carries blood to the heart

An artery is a vessel that carries blood away from the heart

An vein is a vessel that carries deoxygenated blood

[2 marks]

7 Discuss how the heart is adapted to it's function of pumping blood around the body

.....
.....
.....

[2 marks]

8 Describe how the heartbeat is controlled

.....
.....
.....

[2 marks]

9 In some cases, the heartbeat can become irregular, how can doctors treat this?

.....
.....
.....

[2 marks]

10 What are the coronary arteries and why are they so important?

.....
.....
.....

[2 marks]

[Total 21 marks]